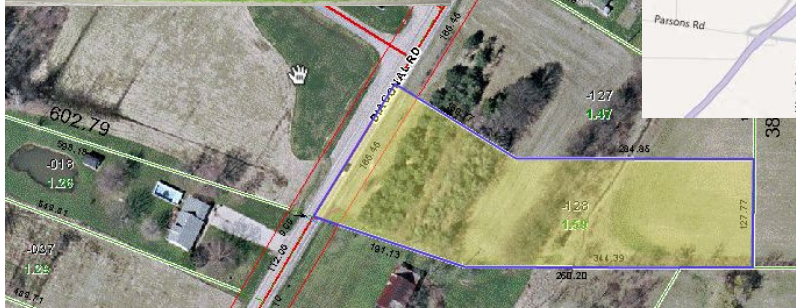
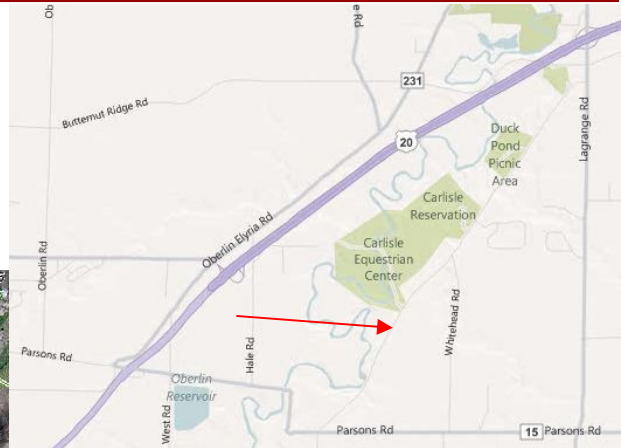


Building Lot in Lagrange

1.59 acre building lot for sale or build to suit



Lot -028 Diagonal Road, Lagrange, OH
Located between SR 301 and Parsons Road



- 1.47 Acres of buildable land on Diagonal Rd in Lagrange Twp, Oh.
- Located across from Lorain County MetroParks, Carlisle Reservation Equestrian Trails.
- Asking \$40,000
- MLS # 3222528
- Lot immediately to the North is also available (see MLS# 3222527)



Paul W. Drury
Broker / Consultant
Keller Williams Realty
Greater Cleveland West
30400 Detroit Road
Westlake, OH 44145
440-385-5650 ph
440-710-0623 fax



paul@druryrealty.com

www.drury.kwrealty.com
www.druryrealty.com



More information available for viewing at www.communityohio.com